

SO YOU HAD 4 COPIES OF THE HGN DELIVERED?!

We have a problem that shouldn't happen to a nicer publisher. We've been adding various North American Henry George School mailing lists to the HGN. If you are on more than one list (and it's likely you are) you'll get a duplicate listing in our files. Our problem is to merge the lists and remove duplications. It's a problem because we are severely limited in staff AND we have to decide which of the listings should be removed. Strangely enough, with the relatively cheap non-profit postage, it isn't too expensive to leave them in for a while. However, we are getting to them! What we shall do is to remove the cards that originate in far away places. For example, if you live in New York and you get the HGN from San Francisco, Los Angeles and Long Island, the Long Island card will stay in — the rest will be culled. Other mailings will originate, as before, from the various local Henry George Schools.

Why hasn't this already been done? Well, this is our problem (all HG Schools should have such problems)! Almost at the end of the school year, a high school became hot for our InterStudent High School material. They had the money to buy and wanted to try a week with 150 students as an 'audition' for a full-scale Program next Fall.

From our last printing of 2,000 booklets, we had fewer than 40 left. So, we couldn't supply them, could we?

Like heck we couldn't! Although the Eighth Edition was only partly finished (didn't we have all summer to do it?) We got to the machines and started work.

Before the end of term (and before final exams) we completed, printed and

delivered the booklets and the students suffered through their first Mini-Unit.

We **could** have pleaded "nolo contendere" or something, and got on with the mailing lists, but we thought the kids should have priority. And, so do you.

Things look bright for the future. You can expect a HGN with more pages and a new name. In this Centennial year

the Henry Georgists are beginning to show a little muscle.

Join us in future issues as we explore the contemporary scene from the viewpoint of classical political economy.

And bear with us for a while as we plow through the lists, culling with care the duplicates and correcting the errors. Thanks!

NO COMMENT

The Suffolk County Legislature on January 23, 1979 approved Resolution No. 1032 TO STUDY THE EFFECTS OF LAND VALUE TAXATION IN SUFFOLK.

The purpose of this memo is to outline the specification for the study to satisfy the requirements of the Resolution.

The Study should include the following:

An analysis of the difference between Land Value Taxation and other forms of Real Property Taxation.

An analysis of the current tax burden under the current system.

A statistically significant sample for each property classification for each town in Suffolk County.

An evaluation of the relationship between market value and assessed value for the various classifications of properties in the county by town.

An estimation of full value for each parcel in the sample.

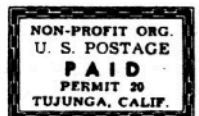
Determination of the shifting tax burden between and within classes of property under various policies of land value taxation. For example, taxing the full value of the land plus the current assessed value of the improvements or utilizing differential tax rates.

The Study specifications are subject to the following:

- a) That adequate data be available in order to satisfactorily conduct the study.
- b) That Suffolk County cooperate with the study team to its fullest capacity.
- c) That the county provide the study team with all available data in computer and non-computer form at no cost to the study team.

Henry George News : Volume 43 — Number 6. Published by the Henry George School of Social Science : Lancaster M. Greene, chairman - Publications Committee. Subscriptions (\$2 a year — \$5 for 3 years) to : 50 East 69th St., New York NY 10021.

HENRY GEORGE NEWS
Box 655 Tujunga CA 91042



JACOB B. HIMMELSTEIN
137 UNION AVE.
BALA CANYON WYD.
PA 19004